



OKLAHOMA

GEAR UP



▶ WHAT IS OKLAHOMA GEAR UP?

OKLAHOMA GEAR UP (GAINING EARLY AWARENESS AND READINESS FOR UNDERGRADUATE PROGRAMS) is a federally funded program administered by the Oklahoma State Regents for Higher Education. The federal investment of \$34.7 million over the next seven years will directly benefit more than 15,833 7th-12th grade students in 13 school districts across the state.

Partners

Schools

- Ada
- Altus
- Clinton
- Durant
- Grove
- Guthrie
- Jay
- Locust Grove
- Noble
- Sapulpa
- Skiatook
- Stilwell
- Tahlequah

Institutions of Higher Education

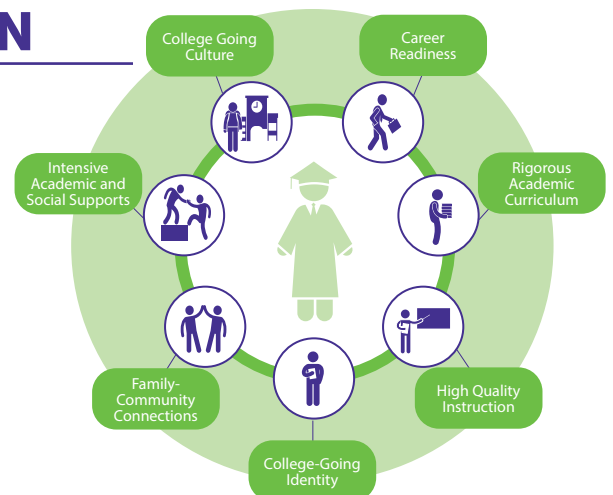
- East Central University
- Northeastern State University
- Southeastern Oklahoma State University
- Southwestern Oklahoma State University
- University of Central Oklahoma

Organizations

- ACT
- Cherokee Nation
- Chickasaw Nation
- Choctaw Nation
- Cooperative Council for Oklahoma School Administrators
- Oklahoma College Assistance Program
- Oklahoma Career Tech
- Oklahoma State Regents for Higher Education
- Southern Regional Education Board (SREB)
- University of Oklahoma Health Sciences
- University of Oklahoma K20 Center

▶ OKLAHOMA GEAR UP DESIGN

Oklahoma GEAR UP's design is based on seven critical conditions that will prepare middle and high school students for college success through direct student support services, effective educator professional development and leadership opportunities, and parent and family outreach activities and events. Coaches on five college campuses will provide college freshmen who graduated from GEAR UP high schools with assistance in acclimating to college life.



▶ OKLAHOMA GEAR UP GOALS & OBJECTIVES



Oklahoma GEAR UP will have ongoing data collection to track the progress toward achieving the program's objectives. The data will be housed in *TREK*, a web-based, student-level data tracking system devlped by the University of Oklahoma K20 Center.

GOAL 1

Increase the academic performance and preparation for postsecondary education for students.

- ▶ Students will pass Algebra I by the end of 9th grade, increasing 10% from the baseline beginning in grant year three.
- ▶ The percentage of students who have at least 90% attendance will increase 10% over the seven years to 89%.
- ▶ The promotion of students will maintain the current rate through grant year seven.
- ▶ Rigorous academic curriculum: The percent of juniors and seniors who complete two or more AP or concurrent enrollment courses will increase annually by 5%.

GOAL 2

Increase the rate of high school graduation and enrollment in postsecondary education for schools.

- ▶ The high school graduation rate will increase 2% annually beginning in year three to 90%.
- ▶ The postsecondary enrollment rate will increase from the baseline by an average of 5% annually up to 65%.
- ▶ Students who enroll in an IHE and who persist to the second year of postsecondary education at the initial or at a subsequent IHE will increase from the baseline by an average of 3% annually beginning in year three.
- ▶ The percentage of high school seniors who complete an Oklahoma's Promise application by the deadline will increase by 5% annually reaching 60% by year seven.

GOAL 3

Increase students' and their families' knowledge of postsecondary education options, preparation, and financing.

- ▶ Seniors who complete the FAFSA will increase 5% annually from the baseline to 70%.
- ▶ 10th grade students' educational aspirations/expectations of postsecondary options will increase five percentage points annually from the baseline survey in grant year one (the goal will be set once the baseline has been established). 10th grade was chosen so there would be time to implement programming to meet the needs of students well before 12th grade.



OKLAHOMA STATE REGENTS
FOR HIGHER EDUCATION

Improving our future by degrees

The Oklahoma State Regents for Higher Education (OSRHE) received its first state GEAR UP grant totaling \$20.5 million in 1999. The grant was supplemented with a one-year extension of \$4.4 million in 2004. OSRHE received additional seven-year GEAR UP grants totaling \$20.6 million in 2005, \$34.9 million in 2011 and \$24 million in 2017. In September 2024, OSRHE was awarded its fifth, consecutive GEAR UP grant in the amount of \$34.7 million over the next seven years.

▶ OKLAHOMA GEAR UP SERVICES



College-Going Culture

Expanded Definition – Using a research-based approach, OK GEAR UP will provide data illustrating each school's college-going culture score and programming for students, families and educators to increase the college-going culture of schools.

College Application Assistance/Schoolwide Application Campaigns – By implementing a college app campaign, high schools can ensure that all seniors have the opportunity to receive hands-on assistance as they take the first big step toward continuing their education following high school.

Grade-level Specific 'Postsecondary and Financial Aid Knowledge' Workshops – These

presentations will include the following topics: academic advising to promote enrollment in rigorous coursework, financial aid and literacy instruction, SAT/ACT preparation, and postsecondary fit and academic matching.

College and Career Fairs – OK GEAR UP will help coordinate these events to expose middle school students to college and career opportunities.

Oklahoma's Promise Campaigns – OK GEAR UP staff will help students understand the benefits of Oklahoma's Promise and offer one-on-one completion assistance.



Career Readiness

Career Advising Milestones – OK GEAR UP will implement a model to advise students on careers so they are prepared and trained to fill needed jobs that pay a living wage. See the **Career Advising Milestones** attachment for grade-level details.

– Academic readiness will be assessed regularly through the provisions of the PreACT 8/9, PreACT and ACT assessments.

Job Site Visit/Job Shadowing – OK GEAR UP will help students find and coordinate visits to companies and organizations in their communities to learn more about their career interests.

ACT Suite Score Interpretation and Item Analysis



Rigorous Academic Curriculum

SREB Curriculum – SREB will perform three-day, on-site curriculum and instruction reviews. Following these reviews, SREB will work with administration and teacher teams to develop professional development specific to review findings around engaging instruction, high-quality career pathways, aligned curricula, student supports, and leadership for continuous improvement.

ACT Prep – OK GEAR UP will provide test preparation, study skills, and reading for information training for juniors and seniors prior to taking

the ACT exam. The ACT is a recognized college entrance exam in Oklahoma.

PreACT 8/9 and ACT – OK GEAR UP will provide a PreACT 8/9 to 8th graders and an ACT assessment to all juniors in their home schools.

AP and Concurrent Enrollment – Students will be advised on the opportunities to take AP/concurrent enrollment courses based on career interests. They will receive financial support from OK GEAR UP and the State of Oklahoma.



High-Quality Instruction

PD For Pre-algebra and Algebra I – The National Council of Teachers of Mathematics will provide workshops for OK GEAR UP middle school math teachers in its effective mathematics teaching framework.

Uplifting Classrooms Training – This PD is designed to provide early-career teachers with a number of practical, research-based tools and

activities to help them to begin teaching successfully.

Instructional Coaching – OK GEAR UP faculty support coordinators will provide individualized professional development using the Jim Knight instructional coaching model. Teachers will meet with the OK GEAR UP faculty support coordinators each week through a combination of in-person and virtual meetings.

▶ OKLAHOMA GEAR UP SERVICES



College-Going Identity

College Visits/College Student Shadowing

– GEAR UP knows from our data and national data that it takes three college visits for a student to believe they can be successful in postsecondary education. OK GEAR UP will provide college visits for all 7th and 8th graders. Additional campus visit opportunities will be available to 11th and 12th graders based on career interests.

Summer College Orientation Events – The process of starting college and a lack of information about the campus and its resources can be huge stumbling blocks to students. GEAR UP will encourage students to attend summer orientation events and reimburse students for fees they incur.

Connect U College Enrollment Events – CONNECT

U is a program designed specifically to help high school seniors with the college enrollment process. CONNECT U events, hosted by OK GEAR UP's higher education partners, will help ease the transition to college by providing tools needed for the first day of school.

Postsecondary Advising – OK GEAR UP staff will implement counseling, advising, and mentoring services to 11th and 12th grade students to help students identify the best pathways for their postsecondary education.

Summer Counseling – OK GEAR UP College Coaches will provide counseling over the summer to help students avoid summer melt and ensure they start college in the fall.



Intensive Academic & Social Supports

Academic Planning and Advising

– OK GEAR UP staff will align counseling/advising services to ensure that students are advised to take courses in high school that align with the Oklahoma's Promise scholarship program requirements and minimum admissions requirements for four-year universities.

Student Mentoring – OK GEAR UP will implement Student Connect, a program to support and promote students' engagement at school and with learning. Each student participating in Student Connect will be assigned a mentor, who will seek to build relationships with participating students and connect them with

their school, help them make academic progress, and encourage them to set strong postsecondary goals.

STEM Summer Academies – OK GEAR UP will partner with OSRHE to encourage 8th-12th graders to discover the fascinating world of STEM while experiencing life on a college campus.

College Coaches – Coaches will be housed at each of the five colleges and universities most frequently attended by students from OK GEAR UP target districts (see **Partners** for the list). Coaches will help students smoothly transition into college and navigate through their freshman year. They will help students achieve their goals, overcome obstacles and offer support.



Family-Community Connection

To support students on their journeys to postsecondary education, OK GEAR UP will provide information to families and the community about GEAR UP services via a variety of platforms, including okgearup.org, Facebook, Twitter, Instagram and electronic newsletters. In addition, OK GEAR UP will coordinate the following outreach campaigns and workshops for students and families:

- Communication on the Availability of Postsecondary Resources
- FAFSA Campaigns/Events
- 1:1 FAFSA Completion Advising

- Concurrent Enrollment Campaigns/Events
- Oklahoma's Promise Campaigns/Events
- 1:1 Oklahoma's Promise Application Assistance

Local GEAR UP Advisory Boards – OK GEAR UP will implement local GEAR UP advisory boards in each GEAR UP school district. Members will be critical stakeholders, often faith-based and business leaders, elders, and others who work with students, family members and educators. These local GEAR UP advisory boards will develop, reinforce and promote community-wide messages aligned with OK GEAR UP's activities.

OKLAHOMA GEAR UP CAREER ADVISING MILESTONES

GRADE	CAREER ADVISING MILESTONES
7	<ul style="list-style-type: none"> • Use YouScience College and Career Readiness platform to complete middle school interest inventory and aptitude assessment • Meet individually with an OK GEAR UP site director to review YouScience results • Explore possible career clusters using results from YouScience assessment • Participate in first college campus visit, hosted by OK GEAR UP college coach • Attend workshop, “Introduction to College Costs” • Participate in college and career fairs
8	<ul style="list-style-type: none"> • Take PreACT 8/9 • Retake YouScience middle school interest inventory and aptitude assessment • Meet individually with an OK GEAR UP site director for interpretation of PreACT 8 and YouScience results • In collaboration with an OK GEAR UP site director, choose a possible career path based on PreACT (academic achievement) and YouScience (aptitude and interest) results • Create an initial plan for high school coursework based on chosen career path • Participate in second college campus visit hosted by an OK GEAR UP college coach • Participate in college and career fairs • Attend Oklahoma’s Promise Night events for students and families to learn about the scholarship and its contribution to paying for college • Receive individual assistance from OK GEAR UP staff for students and families to complete the application for the Oklahoma’s Promise scholarship
9	<ul style="list-style-type: none"> • Meet individually with an OK GEAR UP site director to discuss academic strengths/weaknesses, aptitudes, and interests • Participate in workshops to create an Individual Career Academic Plan (ICAP) portfolio on okcollegestart.org; revisit choice of career path • Refine four-year plan for high school coursework leading to graduation based on career path identified in ICAP • Attend Oklahoma’s Promise Night events for students and families to learn about the scholarship and its contribution to paying for college if application is not yet complete • Receive individual assistance from OK GEAR UP staff for students and families to complete the application for the Oklahoma’s Promise scholarship if not yet complete
10	<ul style="list-style-type: none"> • Take PreACT and interest inventory • Meet individually with an OK GEAR UP site director for interpretation of PreACT results • Update ICAP portfolio in collaboration with an OK GEAR UP site director • Attend workshop, “Building Postsecondary Vocabulary” • Attend presentation by OK GEAR UP college coach explaining concurrent/concurrent enrollment • Meet with an OK GEAR UP site director to select concurrent enrollment courses based on ICAP; enroll in these courses to be taken in the 11th grade • Receive individual assistance from OK GEAR UP staff for students and families to complete the application for the Oklahoma’s Promise scholarship if not yet complete

▶ OKLAHOMA GEAR UP CAREER ADVISING MILESTONES

GRADE	CAREER ADVISING MILESTONES
11	<ul style="list-style-type: none"> • Take the ACT in the fall • Meet individually with an OK GEAR UP site director for interpretation of ACT results • Update ICAP portfolio in collaboration with an OK GEAR UP site director • Attend workshop, "Funding for College: How Will I Pay for This?" • Participate in small group campus visits targeting specific departments based on ICAP, hosted by GEAR UP college coaches • Attend a career panel with community employers to obtain local workforce information • Meet with an OK GEAR UP site director to select concurrent enrollment courses based on ICAP, enroll in these courses to be taken in the 12th grade • Receive individual assistance from OK GEAR UP staff for students and families to complete the application for the Oklahoma's Promise scholarship if not yet complete
12	<ul style="list-style-type: none"> • Update ICAP in collaboration with an OK GEAR UP site director • Narrow school choice to three options based on ICAP • Attend workshop, "Intro to College Processes and Resources" • Participate in small group campus visits targeting specific departments based on ICAP, hosted by GEAR UP college coaches • Receive assistance from OK GEAR UP staff to complete applications during College Application Week • Receive funding from OK GEAR UP for concurrent enrollment fees (the state pays tuition) • Attend a FAFSA Night event for students and their families • Receive individual assistance from OK GEAR UP staff for students and families to complete the FAFSA • Attend Connect U, a college-enrollment event hosted by an OK GEAR UP college coach during the school day: finish placement testing, obtain ID, class schedule, and housing contract • Register for summer orientation at chosen college; receive funding for orientation from OK GEAR UP
COLLEGE FRESHMEN	<ul style="list-style-type: none"> • Participate in InsideTrack coaching with an OK GEAR UP college coach • Continue assessment of college financial needs; apply for departmental scholarships • Apply for following year FAFSA with assistance of an OK GEAR UP college coach • Meet with an academic advisor to obtain a degree checklist • Work with an OK GEAR UP college coach on reading degree checklist and make along-range plan for coursework • Declare major by the end of the freshman year with the assistance of an OK GEAR UP college coach • Enroll for second year of college



OKLAHOMA GEAR UP

655 Research Parkway, Suite 200
Oklahoma City, OK 73104
www.okgearup.org



okgearup



OklahomaGEARUP



okGearUp